



HCP PUMP

We make the reliable pumps

PROFESSIONAL MANUFACTURERS OF SUBMERSIBLE PUMPS

50Hz GENERAL CATALOGUE

ISO
9001



TUV



sewage pump, waste water pump, stainless pump, grinder pump, dewatering pump, construction drainage pump,
large volume pump, axial pump, ejector, deep well pump.

HCP PUMP MANUFACTURER.,CO.LTD.

F SEWAGE/EFFLUENT SUBMERSIBLE PUMPS

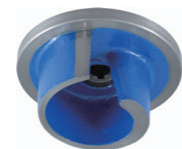
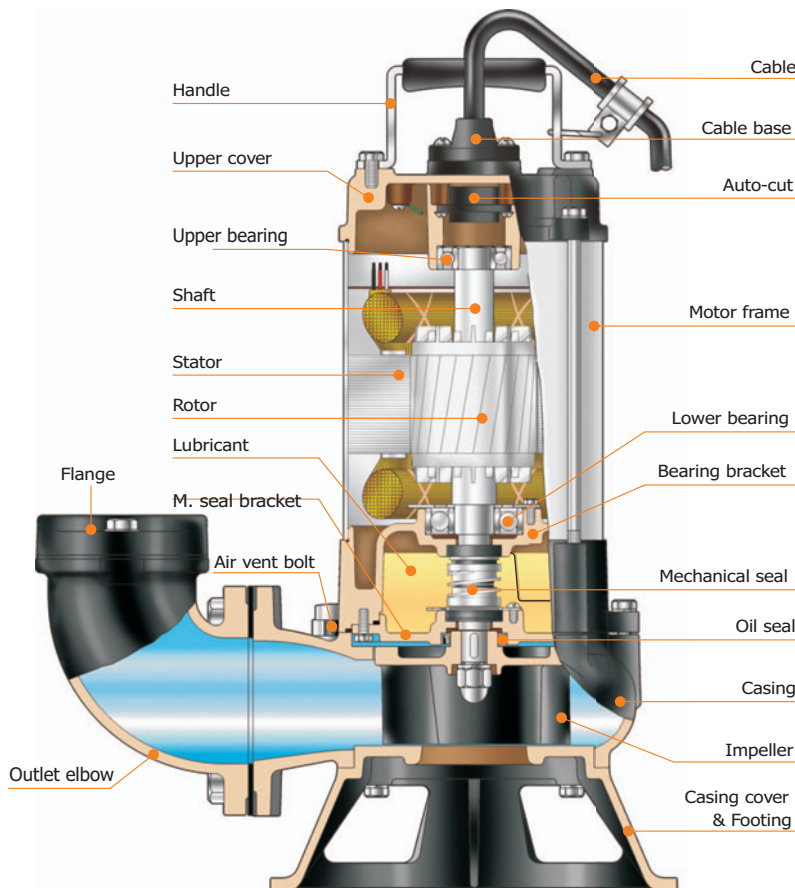


FEATURE

- A precision manufactured motor is achieved by utilizing the highest standard of quality control. All rotors adopt heat treatment methods for drive shaft assembling, and stator winding impregnated with varnish that is heat dried in an industrial oven. The Water Resistance for Pump can reach IP68 Grade.
- HCP's professional assembly line, complimented with a synthesized production test, ensures the highest level of final pump quality.
- Standard accessories include : cable with an epoxy resin sealed water-resistant cable base, AC thermal motor protector, dual mechanical seals and lip seal design.
- The F-05A is an extremely practical pump, with an oil filled motor and single seal design (CA/CE).

APPLICATIONS

- Drainage of sewage from the building basements, hotel industry, and waste water from factories.
- Drainage of sewage from industrial process factories.
- Emptying of septic tanks, cesspits and sewage pump stations.
- Pumping surface and drainage water from garages and sprinkler systems



P Type Impeller

Semi-open (Single Vane Impeller):
Excellent to use with waste materials to prevent from clogging.



U Type Impeller

Semi-open (Vortex Impeller):
Produces a vortex (whirlpool effect) allowing long fibrous materials and other solid waste to pass through, without contact with the impeller

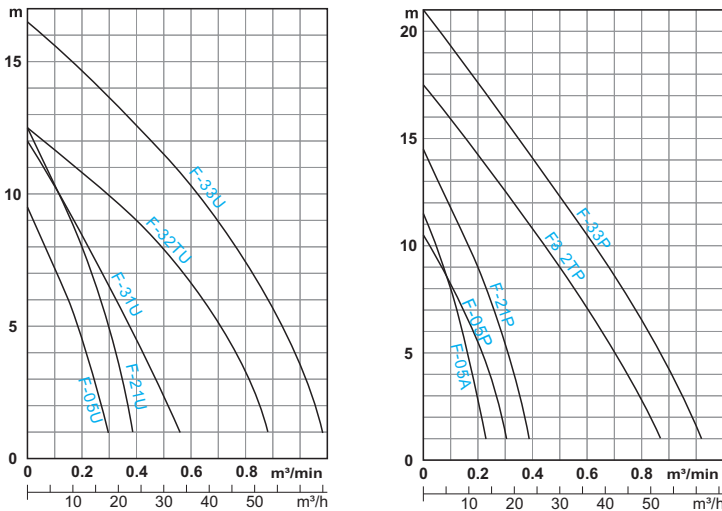
Note: The vortex impeller will cause higher amperage when operated in reverse direction.



■ PRODUCT NOMENCLATURE

F	-	05	A	
Type		HP	Style	
F	-	2	1	P
Type		Discharge inch	HP	Impeller type (P/U)

■ PERFORMANCE CURVES



■ SPECIFICATIONS

Discharge (mm)		50 • 80
Limits Of Use	Liquid Temp.	0~40°C (32~104°F)
	Applications	General wastewater • Sewage water and industrial waster
	Submersion Depth	30m (100feet)
Type	Frequency	50Hz
	Motor	2P (3000RPM) • Dry Motor (F-05A: Oil Motor)
	Insulation	Class B
	Protection	IP68
	Protector	Auto-cut (F-05A 3Ø: none, F-05A/U 1Ø: Overheat)
	Bearing	Ball Type
	M.seal	Double M.seals (F-05A: Single M.seal)
	Impeller	Semi-open
	Upper Cover	FC-200
	Motor Frame	SUS304
Material	Main Shaft	SUS410 (2~3HP: SUS403)
	M.seal	Upper: Carbon/Ceramic Lower: Silicon/Silicon (F-05A: Carbon/Ceramic)
	Casing	FC-200
	Impeller	FC-200 (F-05A: PA)
	Cable	VCT or H07RN-F or SJOW/SOW
Optional	Pumps can be customized to fit specifications	

■ SPECIFICATIONS

Model	HP(kW)	Discharge Inch(mm)	Phase Ø	Start Method	Head (m)	Capacity		Solid Passage (mm)	Weight (kg)		Dimension (mm)				
						m³/min	m³/h		1Ø	3Ø	A	B	C	D	
F-05U	½ (0.4)	2" (50)	1	Capacitor	6	0.15	9	35	16	15	237	154	427	427	
				Direct											
F-21U	1 (0.75)	2" (50)	1	Capacitor	8	0.2	12	35	17	16	237	154	427	427	
				Direct											
F-31U	1 (0.75)	3" (80)	1	Capacitor	6.5	0.3	18	30	18	17	278	173	457	457	
				Direct											
F-32TU	2 (1.5)	3" (80)	1	Capacitor	9	0.4	24	25	38	33	408	270	258	610	530
				Direct											
F-33U	3 (2.2)	3" (80)	1	Capacitor	11.5	0.5	30	25	40	34	408	270	258	610	530
				Direct											
F-05P	½ (0.4)	2" (50)	1	Capacitor	5.5	0.2	12	22	16	15	274	235	440	440	
				Direct											
F-21P	1 (0.75)	2" (50)	1	Capacitor	9	0.2	12	26	18	17	274	235	440	440	
				Direct											
F-32TP	2 (1.5)	3" (80)	1	Capacitor	9	0.5	30	32	38	34	408	270	258	610	530
				Direct											
F-33P	3 (2.2)	3" (80)	1	Capacitor	10.5	0.6	36	35	40	34	408	270	258	610	530
				Direct											
F-05A	½ (0.4)	2" (50)	1	Capacitor	8	0.1	6	10	12	11	226	161	352	350	
				Direct											

Note: Weight Without Cable

