

AS TYPE CONSTRUCTION DRAINAGE PUMPS

■ FEATURES

- Specifically designed for civil engineering applications, where a heavy duty, light weight, top discharge design, is required which is easy to handle. The double outer casing, water cooled motor makes it particularly suitable for low water level applications.
- A fully waterproof IP68 stainless steel structure, combined with a high grade silicon carbide double mechanical seals.
- The AS range of pumps are compact, strong and easy to operate in any situation.



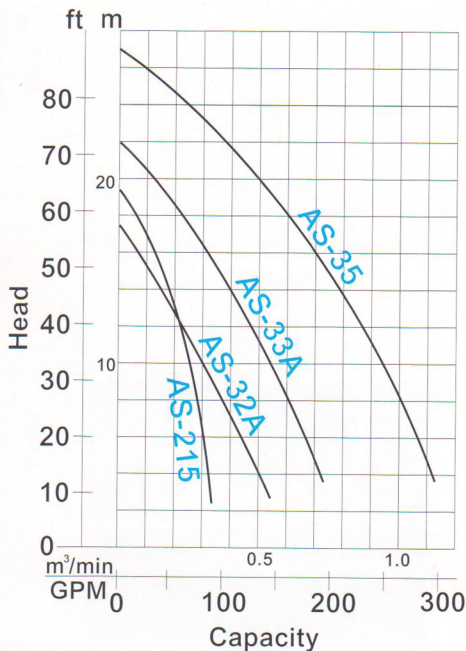
◎HCR impeller

The AS impeller is manufactured in a high chrome alloy (HCR) steel with a hardness of 55 - 60 Rc., which makes it resistant to prolonged use in abrasive applications.

■ APPLICATIONS

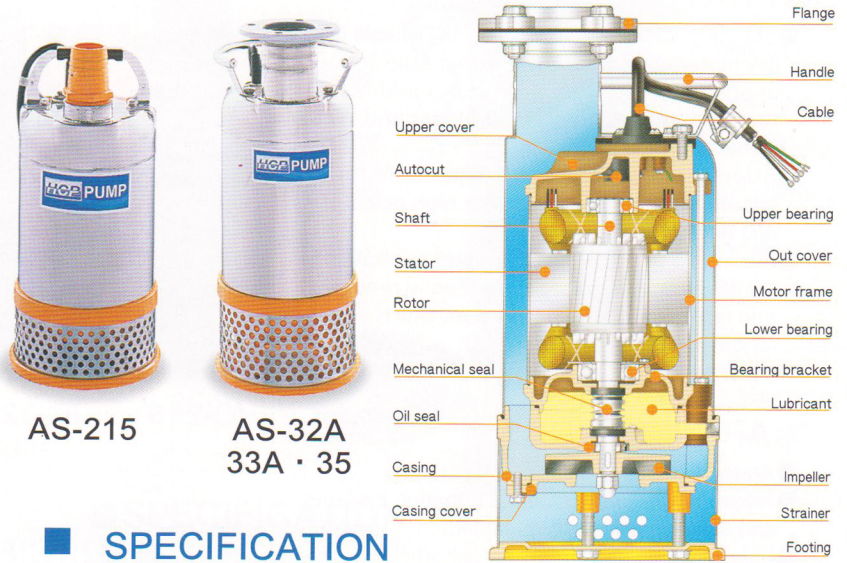
- Civil engineering, dewatering of tunneling and ground works, also for storm water sewers.
- Dewatering of fluids contain solid sediments.
- Easy of mobility for use by contractors, installers and service industries.

■ PERFORMANCE CURVE



■ PERFORMANCE SPEC.

Type	Power HP(kW)	Discharge Inch(mm)	Phase Ø	Start Method	Head m	Capacity m³/min(m³/hr)	Head feet	Capacity GPM	Weight(kg) 1Ø/3Ø	Solid passage mm	Dimension(mm)		
											Length	Width	height
AS-215	1.5(1.1)	2"(50)	1 3	Capacitor Direct	13.5	0.2(12)	45	54	29/25	8	—	210	496
													437
AS-32A	2(1.5)	3"(80)	1 3	Capacitor Direct	10	0.4(24)	33	106	43/39	11	252	235	616
													536
AS-33 A	3(2.2)	3"(80)	1 3	Capacitor Direct	14	0.4(24)	46	106	47/42	11	252	235	616
													536
AS-35	5(3.7)	3"(80)	3	Direct	20	0.5(30)	66	132	46	11	252	235	561



AS-215

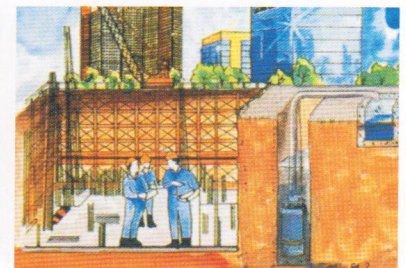
AS-32A
33A · 35

■ SPECIFICATION

Diameter(mm)		50 · 80	
Pumping liquid	Liquid temp.	0~40°C	
	Liquid nature	Waste water and sewage	
	Max depth	30m	
Pump	Structure	Impeller	Open
		Mech seal	Double Mechanical seal
		Bearing	Ball type bearing
	Material	Out cover	SUS-304
		Upper cover	FC-200
		Casing	FC-200
		Impeller	HCR
M.seal	Sic/Sic		
Motor	Type	Dry motor	
	Polarity	2P	
	Insulation	B Class (5HP:F Class)	
	Frequency	50Hz	
	Auto-cut	Automatic reset motor protector	
	Material	Frame	SUS304
Main shaft		SUS403	
cable		VCT	



●Dewatering for civil engineering.



●Dewatering for construction foundation.